



# SMART Bark Collar

## Product Manual

Model TC 985



Please read this manual carefully before use

CUSTOMER SUPPORT:

 [support@elecan.com](mailto:support@elecan.com)

 [www.elecan.com](http://www.elecan.com)

## Welcome to the Elecane Smart Bark Collar User Manual!

We're thrilled to have you as a valued customer and proud owner of our highly **effective bark collar**. This manual has been expertly crafted to provide you with comprehensive guidance on how to make the most of your purchase.

Our bark collar has gained immense popularity, with over **500,000 satisfied customers**. However, we understand that every dog is unique, and certain temperaments may require additional support. Rest assured, we've anticipated this possibility, and we're here to **assist you every step of the way!**

In the unlikely event that your dog falls within the 4% where the collar may not be as effective based on their temperament, don't worry - we have your back! **Our dedicated customer support team is ready to provide you** with a quick and hassle-free solution, or arrange a refund if needed.

Should you have any questions, concerns, or simply want personalized guidance, please don't hesitate to reach out to **our friendly customer support team** at [support@elecane.com](mailto:support@elecane.com). We're committed to ensuring your utmost satisfaction and the successful training of your beloved furry friend.

**Thank you once again for choosing Elecane.** We're excited to join you on this journey towards a quieter and more harmonious environment.

**Let's make barking a thing of the past!**

Warm regards,  
Elecane Customer Support



## BRIEF OVERVIEW OF THE BARK COLLAR AND ITS BENEFITS:

- 1. 100% Safe Collar:** Uses only safe modes - sound and vibration. No electric shocks!
- 2. Comfortable Design:** Gentle on the dog's neck, without prongs! May be less effective for long-haired dogs.
- 3. Smart Training Program:** Flexible mode selection based on your dog's temperament.
- 4. Adjustable Sensitivity:** 7 sensitivity levels for precise collar response tailored to your dog.
- 5. All-Weather Durability:** Train in rain, snow, or humidity with the weatherproof collar (IPX7 waterproof).
- 6. Rechargeable:** Say goodbye to disposable batteries with the convenient rechargeable collar.
- 7. Easy Setup:** Effortless customization with the user-friendly screen.

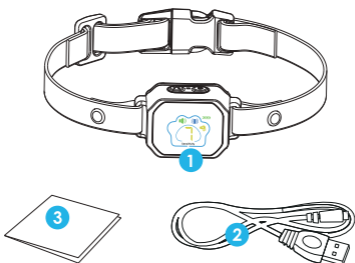
### SAFETY PRECAUTIONS

- 1)** Ensure that your dog does not chew the collar or engage in excessive scratching or clawing. This will help maintain the integrity of the collar and ensure its effectiveness.
- 2)** Our collar is constructed using non-digestible plastic and electronic components. In the event that your dog accidentally swallows any parts of the product, please consult your veterinarian immediately for proper guidance and assistance.
- 3)** Please note that the collar is not designed for use as a restraining collar. If you are using a leash, it is recommended to use it in conjunction with a separate restraining-type collar for proper control and safety.
- 4)** To ensure optimal performance and longevity of your device, we advise using a charging adapter rated at 5V/500-1000mA. The use of a charging adapter rated at 9V or 12V may cause damage to your device. Safety and proper functioning are our utmost concern.



By following these safety precautions, you can ensure the well-being of your dog and maximize the effectiveness of the Elecan bark collar. If you have any further inquiries or concerns, please do not hesitate to contact our dedicated customer support team for assistance.

## UNBOXING AND INSPECTING THE BARK COLLAR



- 1 Bark Collar with Belt
- 2 Type-C Charging Cable
- 3 User Manual

## OVERVIEW OF THE BARK COLLAR'S CONTROLS AND INDICATORS





- Beep
- Vibration
- Battery charge level display
- Work display
- Sensitivity display

# OPERATING INSTRUCTIONS

## CHARGING INSTRUCTIONS

The device is equipped with a built-in 250mAh rechargeable battery. Please follow these steps to ensure proper charging:

1. Use only a charger with a rating of **5V/500-1000mA** to charge the collar.
2. During charging, the battery bars will animate in a circular motion on the screen.
3. When the battery is fully charged, the screen will display the icon (  ) indicating a complete charge. Charging typically takes approximately 2.5 hours.
4. A low battery warning will be indicated by the flashing icon (  ). If this warning persists for 30 seconds, the device will automatically power off.

## EXPLANATION OF THE COLLAR'S DIFFERENT MODES OR SETTINGS

Press and hold the "M" button for 2 seconds to power on the collar. A confirmation indicator will let you know it's ready. Once the collar is powered on, press the "M" button to cycle through the available working modes:



This mode provides an audible alert to discourage excessive barking



The collar will deliver vibrations as a deterrent to unwanted barking



This enables beep+vibration mode, providing both an audible alert and vibrations.

Press the "S" button to access the sensitivity adjustment mode. Use the same button to navigate through the 7 available sensitivity levels. The default sensitivity level is set at 4. Choose the level that best suits your dog's barking behavior by pressing the "S" button until you reach the desired level. Once you've selected the desired sensitivity level, the collar will automatically save your preference.

**Level 7 is the highest sensitivity setting, while level 1 is the lowest sensitivity setting.**



The screen display will automatically turn off after 20 seconds of inactivity. To reactivate it, simply press the "M" or "S" button. Upon reactivation, the device will automatically return to the previous working mode and sensitivity level.

**LED Light Indicator:** When the screen is off, the green light will flash intermittently. When the screen is on, the indicator light will be off.

## TESTING THE ANTI-BARK COLLAR:

Turn on the device and select the desired mode. To test the collar blow into the test hole.

### The working sequence under beep mode:

1st : 0.8 -second beep, the icon ( 🐾 ) flashing for 0.8 seconds

2nd : 1.6-second beep, the icon ( 🐾 ) flashing for 1.6 seconds

3rd : 2.4-second beep, the icon ( 🐾 ) flashing for 2.4 seconds

4th : 3.2-second beep, the icon ( 🐾 ) flashing for 3.2 seconds

5th : 4.0-second beep, the icon ( 🐾 ) flashing for 4.0 seconds

6th : 4.0-second beep, the icon ( 🐾 ) flashing for 4.0 seconds

7th : 4.0-second beep, the icon ( 🐾 ) flashing for 4.0 seconds

8th : 75-second sleep mode. If the interval time between barks exceeds 30 seconds, the collar will automatically return to the first trigger sequence.

### The working sequence under vibration mode:

- 1st : 0.8-second vibration, the icon ( 🐾 ) flashing for 0.8 seconds
- 2nd : 1.6-second vibration, the icon ( 🐾 ) flashing for 1.6 seconds
- 3rd : 2.4-second vibration, the icon ( 🐾 ) flashing for 2.4 seconds
- 4th : 3.2-second vibration, the icon ( 🐾 ) flashing for 3.2 seconds
- 5th : 4.0-second vibration, the icon ( 🐾 ) flashing for 4.0 seconds
- 6th : 4.0-second vibration, the icon ( 🐾 ) flashing for 4.0 seconds
- 7th : 4.0-second vibration, the icon ( 🐾 ) flashing for 4.0 seconds
- 8th : 75-second sleep mode. If the interval time between barks exceeds 30 seconds, the collar will automatically return to the first trigger sequence.

### The working sequence under beep+vibration mode:

- 1st : 0.8-second beep, the icon ( 🐾 ) flashing for 0.8 seconds
- 2nd : 1.6-second beep, the icon ( 🐾 ) flashing for 1.6 seconds
- 3rd : 2.4-second beep, then 0.8s single motor vibration, the icon ( 🐾 ) flashing for 3.2 seconds
- 4th : 3.2-second beep, then 1.6s single motor vibration, the icon ( 🐾 ) flashing for 4.8 seconds
- 5th : 4.0-second beep, then 1.6s dual motor vibration, the icon ( 🐾 ) flashing for 5.6 seconds
- 6th : 4.0-second beep, then 2.4s dual motor vibration, the icon ( 🐾 ) flashing for 6.4 seconds
- 7th : 4.0-second beep, then 3.2s dual motor vibration, the icon ( 🐾 ) flashing for 7.2 seconds
- 8th : 75-second sleep mode. If the interval time between barks exceeds 30 seconds, the collar will automatically return to the first trigger sequence.

## ADJUSTING THE COLLAR FOR PROPER FIT

1. If the collar is too long, you can trim any excess material.
  2. To adjust the collar length, gently push, pull, or slide the adjuster mechanism.
  3. To achieve the desired fit, mark the appropriate length, considering your dog's growth or thicker winter coat. Trim off any excess strap, leaving a little extra. To prevent fraying, carefully seal the cut edge by briefly exposing it to a flame for a few seconds.
- Please ensure the collar fits comfortably and securely on your dog.



## FITTING THE COLLAR TO YOUR DOG:

Properly fitting the collar is essential for its effectiveness and your dog's comfort. Follow these steps to ensure a correct fit:

1. Center the Probes under your dog's neck (refer to Image A).
  - Adjust the collar so that the probes, which deliver the corrective signals, are positioned in the center under your dog's neck.



2. Position the collar snugly around your dog's neck.
  - The collar should fit securely but comfortably around your dog's neck, ensuring it stays in place during use.



- ⚠ Important:** Make sure you can fit one finger between the strap and your dog's neck (refer to Image B).
- To avoid discomfort or excessive tightness, check that you can slide one finger easily between the collar strap and your dog's neck.

## TIPS FOR TRAINING YOUR DOG WITH THE ANTI BARK COLLAR:

1. **Stay present during the initial training period:**
  - When you begin training your dog with the Anti Bark Collar, it's important to be present and supervise the training sessions. This allows you to provide immediate feedback and ensure the training is carried out effectively.



## TIPS FOR TRAINING YOUR DOG WITH THE ANTI BARK COLLAR:

### 2. Incorporate command training:

- Use specific commands, such as "NO!", when your dog barks. The collar will reinforce the command by emitting a corrective signal. Consistently using the command alongside the collar's correction helps your dog understand that the collar is meant to discourage excessive barking.

### 3. Focus on consistency and repetition:

- Consistency is key to successful training. Use the collar and associated commands consistently every time your dog barks inappropriately.
- Repeat the training sessions regularly to reinforce the desired behavior and help your dog understand the connection between barking and the collar's correction.

### 4. Encourage positive associations:

- Pair the training sessions with positive reinforcement techniques, such as treats, praise, and affection, to create a positive association with the collar and training process.
- Reward your dog when they respond appropriately to the command and refrain from excessive barking.

### 5. Be patient and allow time for learning:

- Every dog learns at their own pace. Be patient and give your dog time to understand the purpose of the collar and the expected behavior.
- Avoid rushing the training process and maintain a calm and positive attitude throughout.

Remember, the Anti Bark Collar is a training tool designed to assist in teaching your dog appropriate barking behavior. It's essential to use the collar responsibly and follow humane training methods. If you have any questions or need further guidance, our customer support team is available to assist you.

**Happy training!**



## FAQs

### 1. Why isn't the collar working when my dog barks?

Please check the following points:

- 1) Is the collar charged? If the collar is low on battery, please charge it before use. Is the collar turned on?
- 2) If the collar is not turned on, please turn it on by holding the "M" button for 3 seconds.
- 3) Check the sensitivity level set and increase it by 1 unit.
- 4) Check the positioning of the collar on your dog's neck. The device should be centered on the throat.

### 2. The collar keeps triggering or is easily activated when my dog shakes its head.

- 1) The sensitivity level may be too high. Please reduce it by pressing the "S" button.
- 2) The collar may not be fitted tightly enough. Please ensure that the collar is properly tightened.

### 3. Is the bark collar waterproof?

The bark collar is weatherproof, meaning it can withstand rain or moisture. However, it is important to ensure that the charging port is tightly sealed and kept dry after getting wet.

### 4. Can I charge this product with any type of charger?

No, we recommend using a charging adapter rated at 5V/500-1000mA. Using a charging adapter rated at 9V or 12V may cause damage to your device.

If you have any further questions, please don't hesitate to reach out to our support team at [support@elecane.com](mailto:support@elecane.com). We are here to assist you and provide any help you may need. Your satisfaction is our top priority, and we are committed to ensuring that you have a positive experience with our product. Feel free to contact us at [support@elecane.com](mailto:support@elecane.com), and we'll be more than happy to assist you!



If you have any questions about the training collar, PLEASE CONTACT US!

→  [elecane.com](http://elecane.com)

→  [support@elecane.com](mailto:support@elecane.com)

→  [www.fb.com/ElecaneBarkCollar](https://www.facebook.com/ElecaneBarkCollar)

